



## 1. Preface

Thank you for choosing QUNDA's latest product QD68WI+ WIFI control system for air conditioner. It is our greatest wish to bring convenience to your life. Please read the user's manual carefully before installation, which will assist you to get the most from the control system.

## 2. Product Function Overview

### 2.1 Application scope

Suitable for cabinet air conditioner, split unit, ceiling & floor unit and ceiling cassette. For the control of complicated refrigeration system. For the control of refrigeration house and the greenhouse.

### 2.2 Product features

- Be able to operate your air conditioner whenever and wherever you are with your mobile phone.
- Mobile phone control and suitable for Android & IOS system.
- WIFI router connection.
- 6.8 inch display panel.
- Remote control function.
- Five working modes: auto, cooling, dry, ventilation and heating.
- Four fan speeds: high, middle, low and auto.
- Two sensors design: sensors for pipe protection and auto defrost.
- Two ways for swing control: stepper motor control and AC motor control for the swing.
- Auxiliary heating function
- Prevent cold air in heating mode.
- Sleep function.
- Outdoor fan is controlled independently.
- 3 minute delayed restart for compressor protection.
- Memory function (optional).

## 3. Diagram Illustration

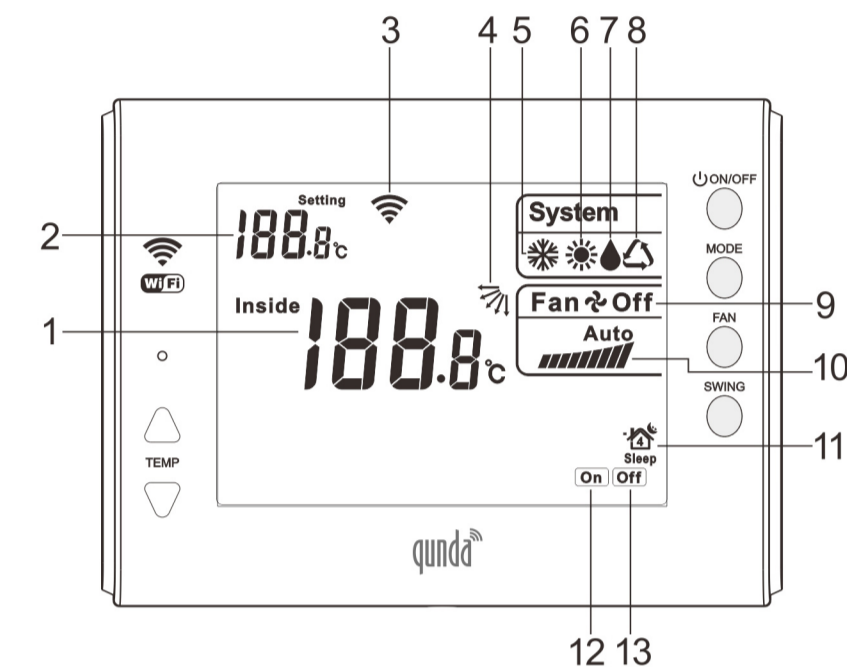


Diagram illustration

No.	Description
1	Indoor temperature. To show the room temperature. It would display EEE in case of communication failure.
2	Setting temperature. It shows the setting temperature.
3	WIFI sign: It appears when WIFI connection is successful.

4	Swing sign : To show swing is running automatically.
5	Cooling sign. To show the current mode is cooling mode.
6	Heating sign. To show the current mode is heating mode.
7	Dry sign. To show the current mode is dry mode.
8	Auto sign. It shows the current mode is auto mode.
	Ventilation. When cooling, heating, dry and auto sign is not displayed, the mode would be ventilation.
9	Off sign. It appears when system is off.
10	Fan speed sign:  vertical bars means low speed,  means medium and  means high. <b>Auto</b> means auto speed.
11	Sleep sign. It would appear when the sleep mode turned on.
12	Sign of turning on. It would appear when the timer on set.
13	Sign of turning off. It would appear when the timer off set.

## 4. The method to control the smart phone

★ Before WIFI operation, install air conditioner correctly according to part 5 and part 6 in this manual to ensure air conditioner works well.

### 4.1 APP download

Method 1: Scan the QR code on the right and start to download "Smart Life".

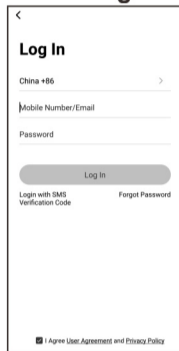
Method 2: IOS users enter APP STORE, Android users enter GOOGLE PLAY, then search "Smart Life" and start to download it.



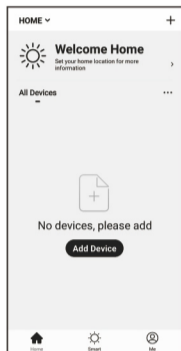
### 4.2 Configure device

Configure Device means to connect mobile phone and control system and connect the control system to the indoor router. Before configuration, please register a personal account or family account according to APP prompt.

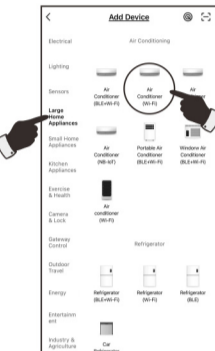
### 1. Fill in the login account and click "Log In".



### 2. Click "Add Device".



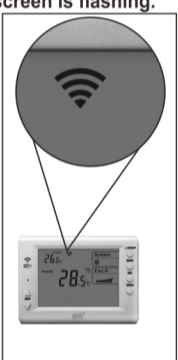
### 3. Click "Air Conditioner (Wi-Fi)".



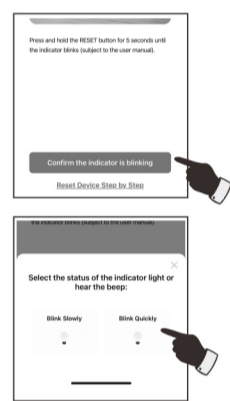
### 4. Choose WIFI and enter the correct password, then click the next step.



### 5. At the state of POWER OFF, press "SWING" button and release it until "WIFI" icon on the screen is flashing.



### 6. Click confirm and then next step.



### 7. Click "Done" to enter the interface.



### 4.3. If you get a configuration timeout, please check as the following tips.

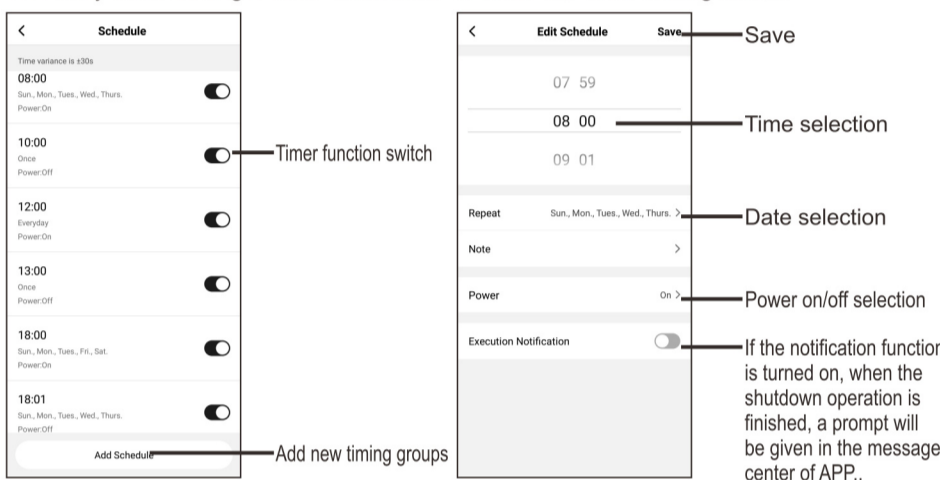
- (1) If your mobile phone is connected to the router and the WIFI network works well.
- (2) If router password is correct.
- (3) If control system is electrified and in configuration mode.
- (4) To configure once again if configuration fails.

### 4.4 APP diagram description



### 4.5 Regular operation

1. Press "Turn on/off" once to turn on the air conditioner, press once again to turn off the air conditioner.
2. Press "+" once to increase 1°C. Press "-" once to decrease 1°C.
3. Mode shift: Press "Mode" once to shift different mode.
4. Fan speed shift: Press "Fan speed" once to change fan speed.
5. Swing: Press "Swing" once to turn on the swing to work automatically. Press once again to turn off swing.
6. Timer off setting: Press "Countdown", and choose the off time in the popping up page. The setting range is 1-10 hours.
7. Weekly timer setting: Press "Schedule" to enter the timer setting mode.



Press and hold the timing group for 2 seconds to delete it.



### 4.6 Frequently asked questions

※ How can we judge the control system has connected WIFI successfully?

When the display panel shows "WIFI" icon, it means the control system has connected to WIFI successfully.

※ Why can not operate air conditioners when the equipment is online?

When the equipment is online, in most cases, it can operate the air conditioner smoothly. If the network is not stable, it may appear delay control (1-3s).

※ APP shows the equipment is offline?

Please check whether the control system is electrified or not, and check whether the router is workable or not.

※ How many accounts can be tied with the control system simultaneously?

We suggest that the whole family members just use one account to avoid double configuration.

## 5. Basic Operation

### 5.1 Regular operation

1. ON/OFF: Control the air conditioner ON/OFF.
2. MODE: Switch the mode among auto, cooling, dehumidification, ventilation, heating.
3. FAN: Switch the fan speed among low, middle, high, auto.
4. SWING: Control the swing louver to work automatically or stop working.
5. TEMP : Press once to raise 1°C. Press once to lower 1°C.

### 5.2 Other functions

#### 1. parameters setting and query

In the status of power off, press and hold the FAN key for 5 seconds to enter into the interface of parameter setting and query. In this interface, press the FAN key to change the parameter code. Press key to adjust the parameter values.

Parameter name	Setting temperature area display	Room temperature area display	Timer area display	default parameter
WIFI status	01	OO: WIFI module communication is normal EE: WIFI module communication is abnormal	No display	
RMT2	02	Indoor coil temperature EE: short circuit.	No display	
RMT3	03	Indoor coil temperature EE: short circuit.	No display	
Memory function setting	04	rE	0: without memory function 1: with memory function	1
Backlight display setting	05	bL	0: turn off backlight 10 seconds delayed / 1: turn the backlight always	0
Room temperature compensation regulation	06	CL	± 5°C adjusting range	0
Buzzer	07	FL	0: Without sound during mobile phone operation 1: With sound during mobile phone operation	0

#### 2. Save factory setting

In the status of power off, press MODE key for 5 seconds, enter into the interface of restoring the factory setting. The screen displays "dEF", press key to save the factory setting and exit.

#### 3. Electric heating function

Connect the electric heater. If original air conditioner doesn't have this function, please do not connect. This connector is invalid.

#### 4. Room temperature display

The room temperature display range is 5~50°C. When the temperature is over 50°C, the room temperature display area shows H1. When the temperature is lower than 5°C, it still shows 5°C.

#### 5. Sensor connection

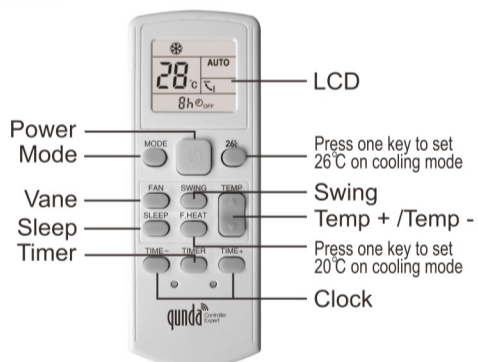
##### RMT2( indoor coil sensor)--white

- (1) Place the RMT2 on the indoor coil, which can protect the indoor unit.
- (2) When RMT3 is not connected, RMT2 has intelligent defrost function.

##### RMT3( outdoor coil sensor)--black

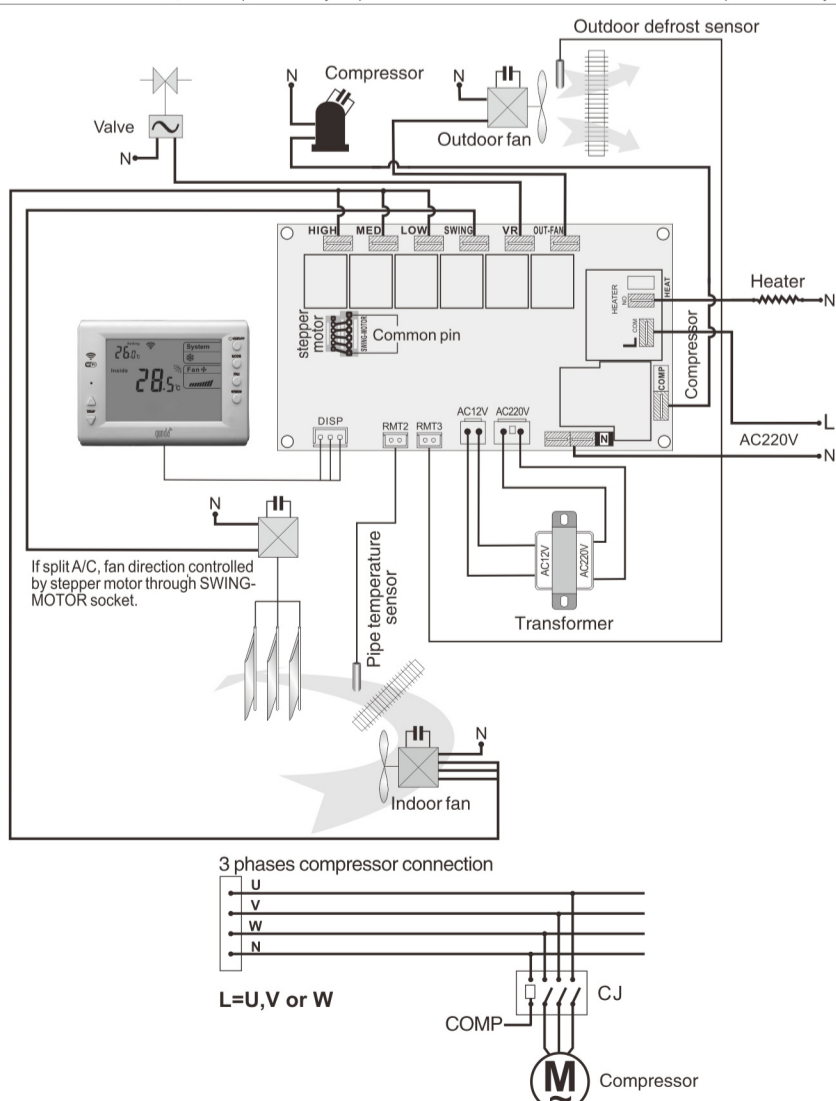
- (1) Place the RMT3 on the outdoor coil closely, which can help to defrost accurately.
- (2) When RMT3 is not connected, the control system will defrost according to the RMT2 testing temperature.

### 6. Remote control function



## 6. Wiring Diagram

▲ For inverter air conditioner, the compressor relay output terminal cannot be connected to the inverter compressor directly.



- After turning off the compressor, it needs 3 minutes to restart.
- Ensure no strong light is in front of IR receiver.

## 7. Technical parameter.

Power	AC220V~240V 50/60HZ
Range of temperature setting	16°C~30°C
Range of temperature display	5°C~50°C
Detection range of room temperature	-9°C~99°C
Detection range of RMT2	-9°C~99°C
Detection range of RMT3	-9°C~99°C
Temperature error	± 1°C
Fuse	5A AC250V
Relay Current of compressor	20A 250V
Relay current of electrical heating	20A 250V
Relay current of indoor fan relay	3A 250V
Relay current of out-fan relay	3A 250V
Relay current of swing relay	3A 250V
Relay current of reversing valve	3A 250V
Step motor output	(DC12V) 5 line or 6 line
LCD display remote	(DC3V) AAA battery*2
Working temperature	0°C~50°C

## 8. Packing fittings

Packing box	1
PCB board	1
Display panel	1
Remote control	1
Transformer	1
Sensor	2
Spare parts package	2
Manual	1

## Company information

Name: QUNDA Control Technology (Jiangsu) Co., Ltd.

Address: NO.888 LongQiao road, wujiang economy development area, suzhou, jiangsu, China

Post code: 215200 Web site: www.qunda.com

★ The final explanatory right is reserved this company. Any alteration on the design and model will not be further notified.